

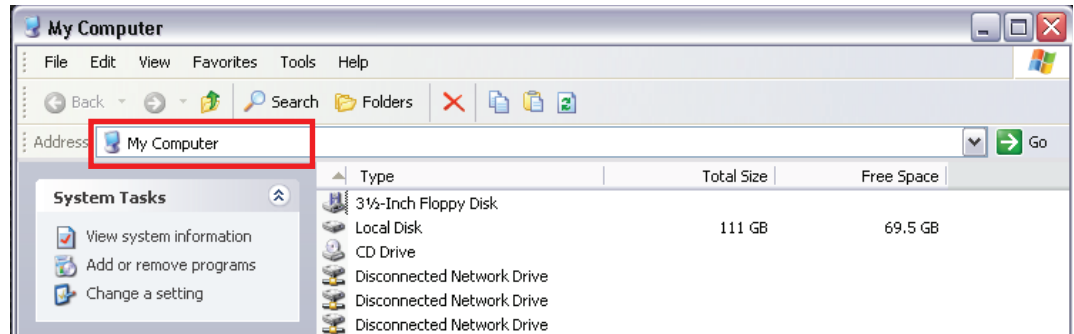


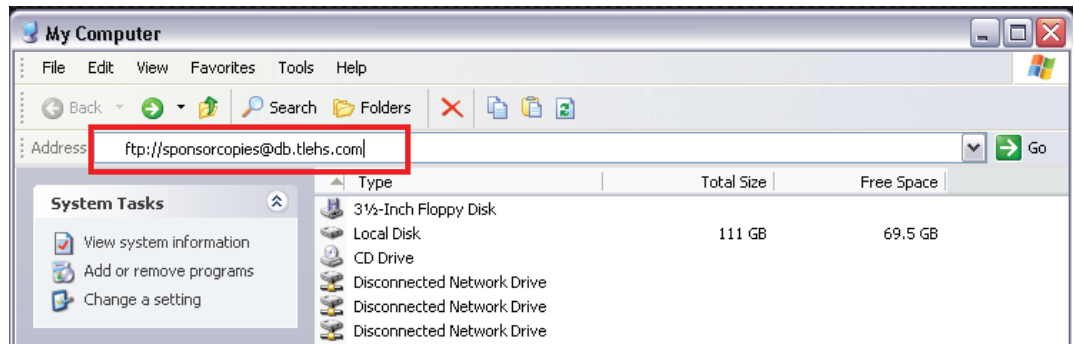
On Windows XP:

1. Open My Computer:
Double click
"My Computer" ()
on your Desktop or Press
the Windows Key+E.

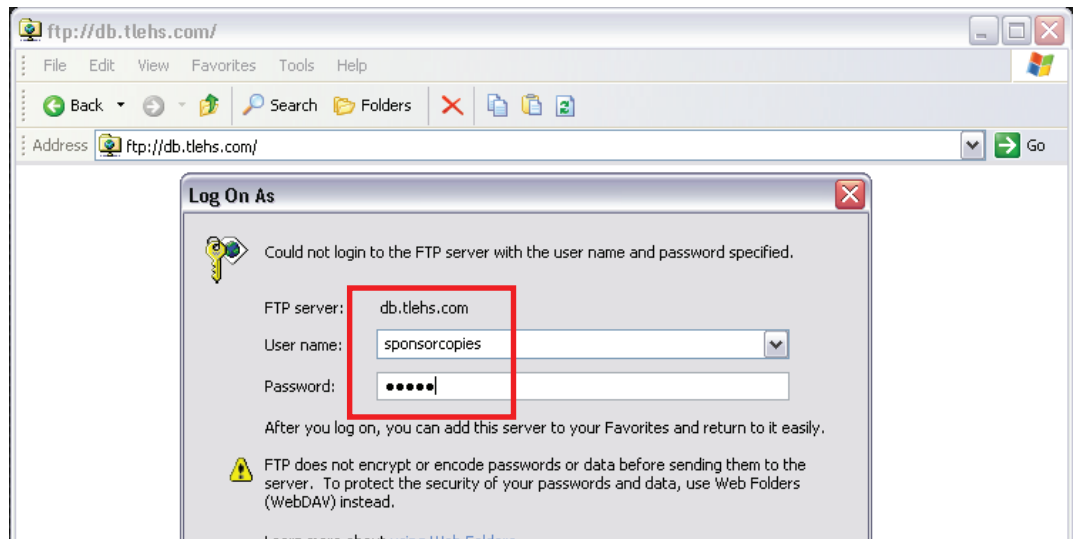
Note: Do NOT use
Internet Explorer ()
to do this.



2. In the Address Bar type
<ftp://sponsorcopies@db.tlehs.com>



3. If not already filled
out enter lowercase
[sponsorcopies](#) for your
Username and enter
lowercase [guest](#) for the
Password.



4. Your folder should be
loaded in the right
portion of the window.

